



Connectors > Circular Connectors > Circular Connector Accessories > Unscreened Circular Connector Backshells & Clamps > CPC Cable Clamps



Protection & Strain Relief Accessory Type: **Cable Clamp**

Compatible With Connector Shell Size: **23**

Body Orientation: **Straight**

Accepts Cable Diameter (Max): **11.51 mm, 17.86 mm [ .453 in, .703 in ]**

Protective Cover: **Without**

[All CPC Cable Clamps \(25\)](#)

## Features

### Product Type Features

Protection & Strain Relief Accessory Type	Cable Clamp
Protective Cover	Without

### Body Features

Primary Product Material	Thermoplastic
Primary Product Color	Black

### Mechanical Attachment

Screw & Hole Thread Size	1-3/8-18 UNEF-2B
--------------------------	------------------

### Housing Features

Body Orientation	Straight
------------------	----------

### Dimensions

Accepts Cable Diameter (Max)	11.51 mm, 17.86 mm[.453 in][.703 in]
------------------------------	--------------------------------------

### Operation/Application

--	--



Compatible With Connector Shell Size	23
--------------------------------------	----

**Industry Standards**

UL Flammability Rating	UL 94V-0
------------------------	----------

**Packaging Features**

Packaging Quantity	1
Packaging Method	Individual

**Other**

Connector Accessory Comment	Cable clamp inserts are not sold separately., Cable clamps can be threaded directly onto plugs or receptacles, or onto back-shell extenders., Clamping areas adjustable by inverting or changing inserts., Components for all cable clamps are packaged unassembled. This includes the cable clamp, two screws, and the clamping inserts., Replacement screws are available in the following sizes: 9.52mm [3/8 in.] -P/N 19024-1, 12.7mm [1/2 in.] -P/N 19024-2, 15.88]mm [5/8 in.] -P/N 19024-3, 25.4mm [1 in.] -P/N 19024-4, 19.05mm [3/4 in.]-P/N 19024-5.
-----------------------------	--

**Product Compliance**

[For compliance documentation, visit the product page on TE.com>](#)

EU RoHS Directive 2011/65/EU	Compliant
EU ELV Directive 2000/53/EC	Compliant
China RoHS 2 Directive MIIT Order No 32, 2016	No Restricted Materials Above Threshold
EU REACH Regulation (EC) No. 1907/2006	Current ECHA Candidate List: JAN 2023 (233) Candidate List Declared Against: JAN 2023 (233) Does not contain REACH SVHC
Halogen Content	BFR/CFR/PVC Free, but Br/Cl >900 ppm in other sources.
Solder Process Capability	Not applicable for solder process capability

**Product Compliance Disclaimer**

This information is provided based on reasonable inquiry of our suppliers and represents our current actual knowledge based on the information they provided. This information is subject to change. The part numbers that TE has identified as EU RoHS compliant have a maximum concentration of 0.1% by weight in homogenous materials for lead, hexavalent chromium, mercury, PBB, PBDE, DBP, BBP, DEHP, DIBP, and 0.01% for cadmium, or qualify for an exemption to these limits as defined in the Annexes of Directive 2011/65/EU (RoHS2). Finished electrical and electronic equipment products

will be CE marked as required by Directive 2011/65/EU. Components may not be CE marked. Additionally, the part numbers that TE has identified as EU ELV compliant have a maximum concentration of 0.1% by weight in homogenous materials for lead, hexavalent chromium, and mercury, and 0.01% for cadmium, or qualify for an exemption to these limits as defined in the Annexes of Directive 2000/53/EC (ELV). Regarding the REACH Regulation, the information TE provides on SVHC in articles for this part number is based on the latest European Chemicals Agency (ECHA) 'Guidance on requirements for substances in articles' posted at this URL: <https://echa.europa.eu/guidance-documents/guidance-on-reach>

## Compatible Parts



TE Part # CAT-AM71-C83998BB  
CPC SERIES 3



TE Part # CAT-AM71-C83998M  
CPC Connectors, Series 2



TE Part # CAT-AM71-C83998J  
Cable/Panel Mount Connector, CPC Series 1



TE Part # CAT-AM71-C83998F  
Connectors with Posted Pin Contacts, CPC Series 1



TE Part # CAT-AM71-C83998CC  
CPC Connector Housing, Series 4



TE Part # CAT-AM71-C83998E  
Connectors with Posted Contacts, CPC Series 2



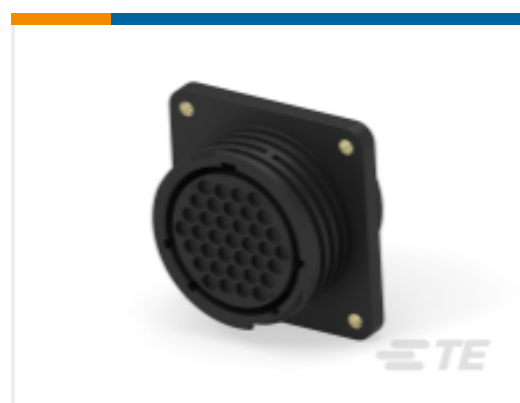
TE Part # CAT-AM71-C83998K  
Circular Connector, Environmentally Sealed, CPC Series 6



TE Part # CAT-AM71-C83998Y  
One-Piece Connector, Sealed, CPC Series 1



TE Part # 206306-2  
23-37 F H RECEPT REV SEX



TE Part # 206306-5  
CPC RECEPT ASSEMBLY SIZE 23-37



TE Part # 206306-1  
23-37 RECEPT REV SEX



TE Part # 1-206934-1  
CPC RECPT ASSEMBLY SIZE 23-37



TE Part # CAT-AM71-C83998GG  
Connectors with Posted Pin Contacts, Right Angle, CPC Series 1



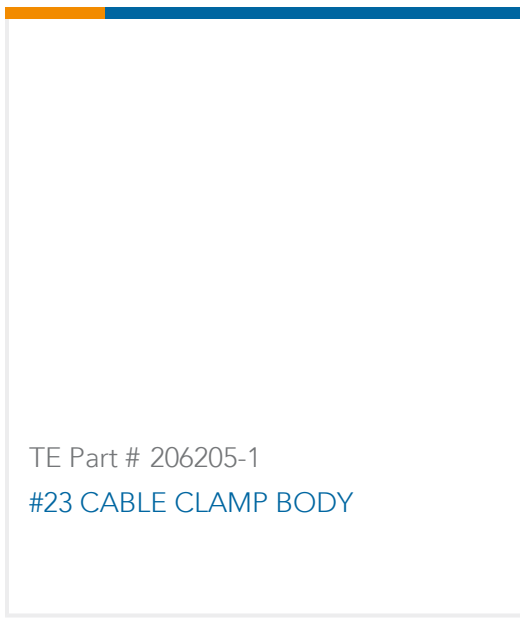
TE Part # 207055-1  
EXTENDER BACK SHELL



TE Part # 1-206934-7  
CPC RECPT ASSEMBLY SIZE 23-37



TE Part # 206934-5  
CPC RECPT ASSEMBLY SIZE 23-37



TE Part # 206205-1  
#23 CABLE CLAMP BODY

### Also in the Series | AMP CPC



Circular Connector Adapters(7)



Circular Connector Boots & Strain Relief(6)



Circular Connector Caps & Covers(16)



Circular Connector Hardware(3)



Circular Connector Keying Plugs(2)



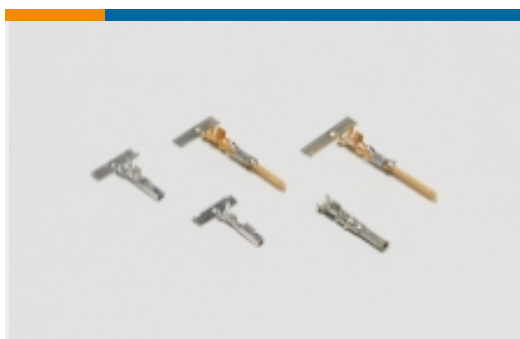
Circular Connector Seals(36)



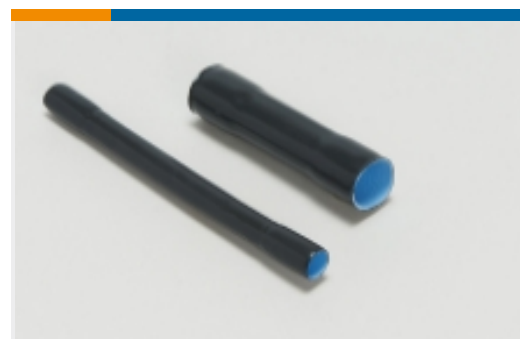
Circular Power Connectors(460)



Insertion & Extraction Tools(1)



Power Contacts(6)



Sealing Sleeves(2)



Unscreened Circular Connector Backshells & Clamps(56)

### Customers Also Bought



TE Part #211770-2  
Cable/Panel Mount Connector, CPC Series 1



TE Part #206226-1  
CPC SERIES 3



TE Part #206437-1  
CPC PLUG ASSEMBLY SIZE 23-57



TE Part #206037-1  
CPC PLUG ASSEMBLY SIZE 17-16



## Documents

### Product Drawings

#### CLAMP CBL SHELL SIZE 23

English

### CAD Files

#### Customer View Model

[ENG\\_CVM\\_CVM\\_206138-8\\_T.2d\\_dxf.zip](#)

English

#### 3D PDF

3D

#### Customer View Model

[ENG\\_CVM\\_CVM\\_206138-8\\_T.3d\\_igs.zip](#)

English

#### Customer View Model

[ENG\\_CVM\\_CVM\\_206138-8\\_T.3d\\_stp.zip](#)

English

By downloading the CAD file I accept and agree to the [Terms and Conditions](#) of use.

### Datasheets & Catalog Pages

#### AMP Circular Connectors for Commercial Signal & Power Applications

English

### Product Specifications

#### Connector, Circular Plastic

English

#### Product Specification

English

### Product Environmental Compliance

[MD\\_206138-8\\_05042018633\\_dmtec](#)

English

[MD\\_206138-8\\_05042018633\\_dmtec](#)

English

### Instruction Sheets

#### Instruction Sheet (U.S.)



English

---

**Agency Approvals**

**CSA Certificate**

English

**CSA Certificate**

English